



BCMA Series

Common Mode Filters For Automotive Signal Line

Size 4532

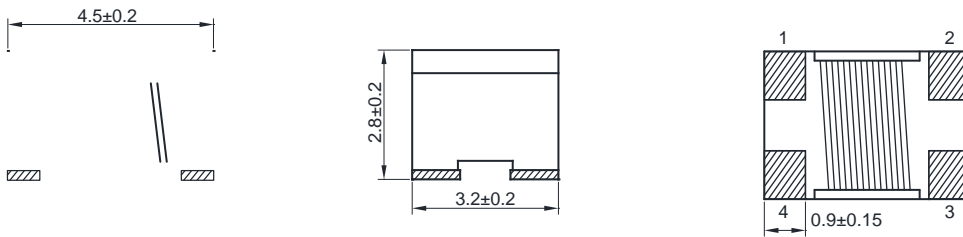
FEATURES

Impedance variation: Extensive lineup are available for compatibility with various usages
 Common mode filters for Signal Line
 Operating temperature range: -40 to +125
 AEC-Q200 qualified
 Quantity: 500pcs

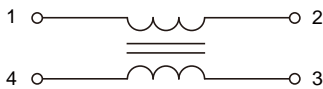
APPLICATION

Radiated noise suppression for car multimedia interfaces (MOST, USB2.0, IDB-1394, etc.)

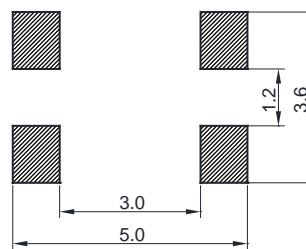
Dimensions: [mm]



Schematic:



Land Pattern: [mm]



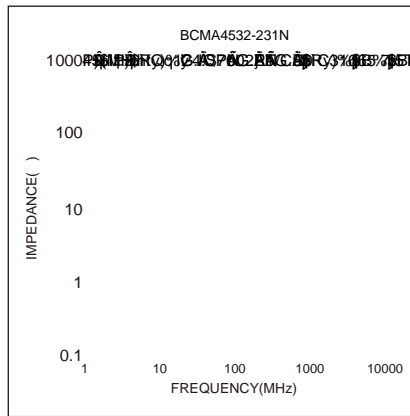
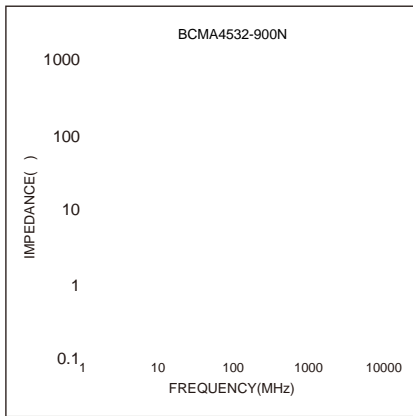
Electrical Properties:

Part No	Z @ 100 MHz Min.	Z @ 100 MHz Typ.	I _R Max.	R _{DC} Max.	V _{DC} Max. (V)	IR Min.
BCMA4532-900N	68	90	4000	0.050	50	10M
BCMA4532-231N	173	230	3500	0.050	50	10M
BCMA4532-601N	450	600	2500	0.060	50	10M
BCMA4532-901N	650	900	2300	0.070	50	10M
BCMA4532-142N	1000	1400	2000	0.100	50	10M
BCMA4532-282N	2100	2800	900	0.350	50	10M

Temperature Rise Current: The actual value of DC current when the temperature rise is T=40°C

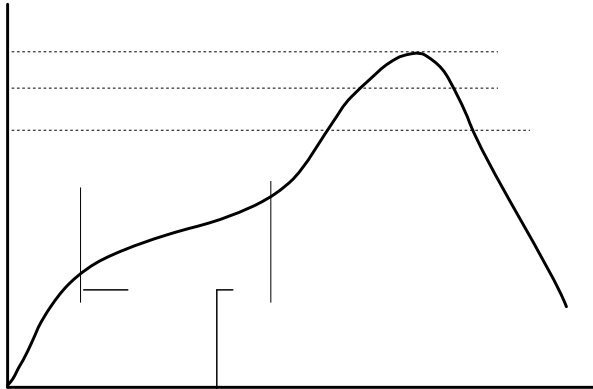


Typical Electrical Characteristics:





Soldering Reflow:



Preheat condition: 150 ~200 / 60~180 sec.

Allowed time above 217 : 60~150 sec.

Max temperature: 260 .

Max time at max temperature: 10 sec.

Allowed Reflow time: 3x max.

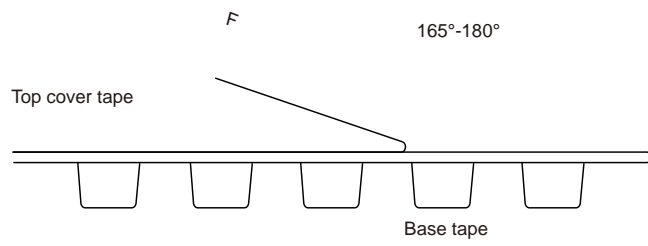
Packaging Information:

Tape Dimension :

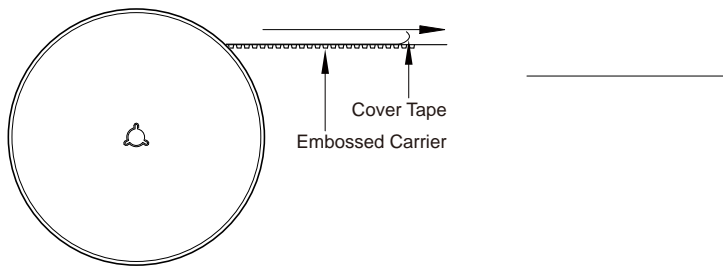
Series	A0 (mm)	B0 (mm)	D (mm)	P0 (mm)	P1 (mm)	W (mm)	K0 (mm)	E (mm)	T (mm)
45? 3& %\$	%&f " ž#	&ž+f " ž#	#ž f " ž#	&ž' f " ž#	*ž' f " ž#	#\$ž' f " ž%	%&f " ž#	#ž)' f " ž#	" ž\$(f " ž'



Peel force of top cover tape:



Reel Dimension : [mm]



Cautions and Warnings:

Storage Conditions :

- The storage period is within 12 months after the completion of production. Be sure to follow the storage conditions (tefa8c4 0e to follow the storage condi -

-

-

-

Operation Instructions:

-

-

-

-